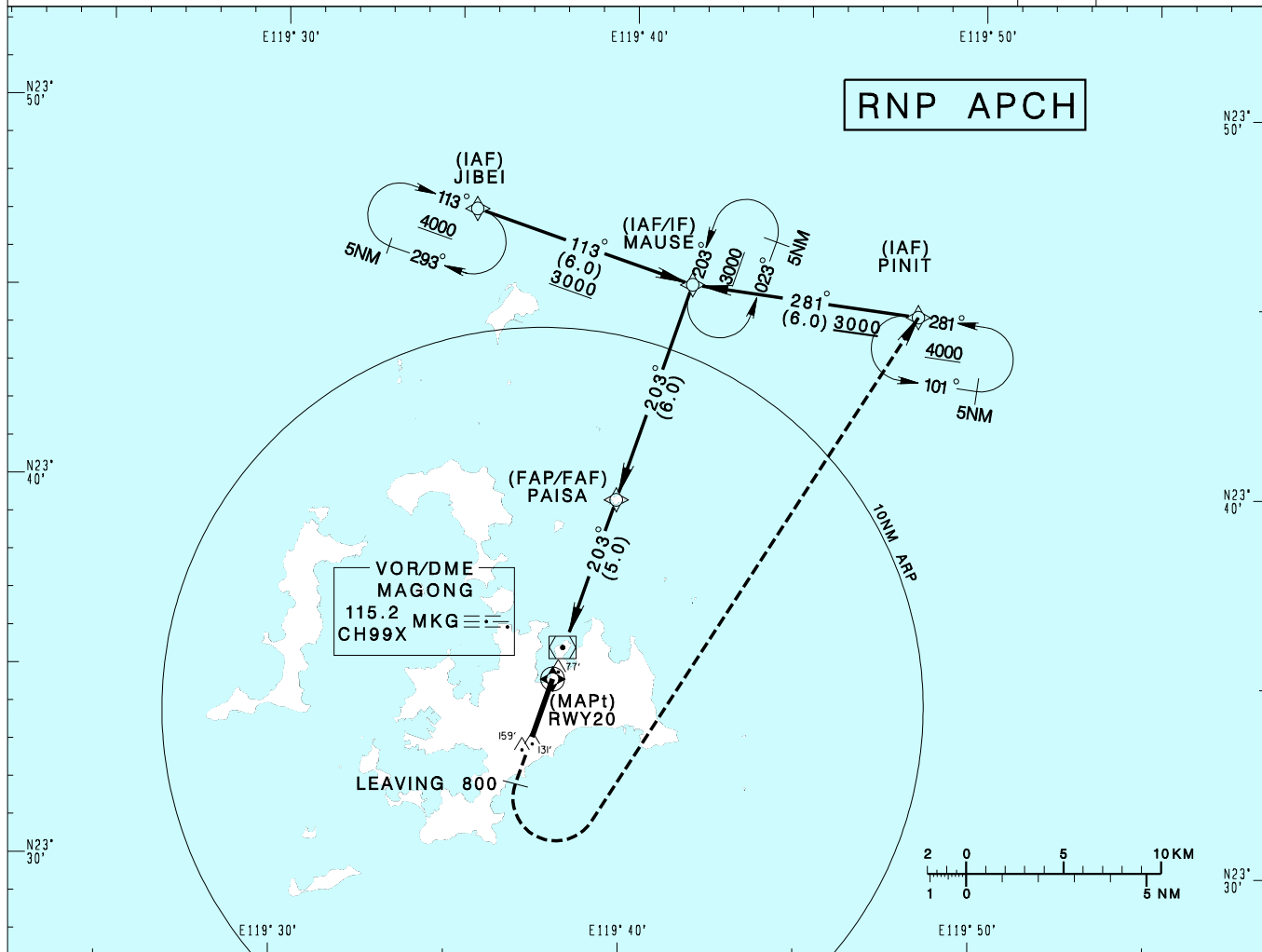


澎湖機場
PENGHU AD

RCQC
RNP RWY20

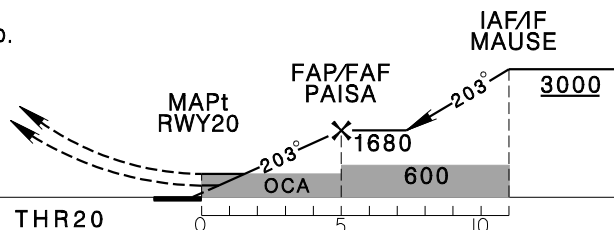
KAOHSIUNG APP 128.1 234.8	MAGONG TWR 118.3 236.6	ATIS 127.05	VAR 4° W-2022 	 2000' MSA ARP 25NM	
Apt Elev: 103'	Rwy20 THR Elev: 46'	Trans Level: FL130			Trans Alt: 11,000'
BEARINGS ARE MAGNETIC; DISTANCES ARE NAUTICAL MILES; ELEVATIONS, HEIGHTS IN FEET					



DIST (NM) to THR 20	1.3	2	3	4	5
DIST (NM) to Next WPT	1.3	2	3	4	PAISA
ADVISORY ALT	510	730	1050	1370	1680

MISSED APCH:
CLIMB RWY HDG TO 800,
TURN LEFT DIRECT PINIT,
CLIMB TO 4000 AND HOLD.

VPA 3.0°
RDH 50



MINIMA (OCA IN FT, VIS IN M, OCH IN FT)

CATEGORY		A	B	C	D
LNAV/VNAV	STRAIGHT IN		340 ⁸⁰⁰ _{RVR 750}	294	
	STRAIGHT IN (ALS OUT)		340 ¹⁴⁰⁰ _{RVR 1400}	294	
LNAV	STRAIGHT IN	510 ⁸⁰⁰ _{RVR 750}	464	510 ¹⁵⁰⁰ _{RVR 1500}	464
	STRAIGHT IN (ALS OUT)	510/1600	464	510/2200	464

NOTE
1. CIRCLING NOT AUTHORIZED.
2. BARO-VNAV NOT AUTHORIZED BELOW 0°C.
3. DME/DME NOT AUTHORIZED.

CHANGES: UPDATE MAG VAR AND TRACK.